



The Howard Center for Human Services

208 Flynn Avenue, Suite 3J, Burlington, VT 05401

Non-Profit Org.
U.S. Postage
PAID
Burlington, VT
Permit No. 129

A PUBLICATION OF
THE HOWARD CENTER
FOR HUMAN SERVICES

CenterScope

CENTERSCOPE IS PUBLISHED THREE TIMES PER YEAR.

FALL 2006
VOLUME VI, NUMBER 3



Tuipate Mubiay (left), Howard's newly hired Diversity Coordinator, is joined by Lorraine Jenne (Director of Operations) and Hal Colston (Howard's first Diversity Coordinator).

Diversity Awareness: Next Steps for The Howard Center

The Howard Center's Diversity Coordinator, a part-time position created over two years ago, plays a vitally important role in the agency, especially at a time when our Vermont communities continue to grow more diverse. Lorraine Jenne, Director of Operations, summed up the main goals of this position: to "help steer our agency toward strategies and programs that help us to understand our differences and help us to become more diverse and culturally competent." In an agency of over 700 employees serving 15,000 individuals and families in a single year, this is no small feat.

Recently Tuipate Mubiay was hired as the new Diversity Coordinator of The Howard Center, replacing Hal Colston who has filled the position since its origin in March 2004. Tuipate, currently enrolled in a Master's of Social Work program at the University of Vermont, brings to the agency a wide variety of professional experience, including his role as co-founder and first president of the African Association and work with the refugee and immigrant popula-

tions of Vermont. Of equal importance are Tuipate's gifts as a good listener and his ability "to connect with people very comfortably," noted Hal. "An asset he will bring to the job is his experience for building relationships in the community. I feel this is important because it will give our staff more opportunities to do outreach regarding our services and better serve our growing diverse community."

Hal laid a solid foundation for increasing diversity awareness at the agency over the last two-and-a-half years. When asked what gave him the greatest sense of accomplishment in the Diversity Coordinator position, he responded, "Institutionalizing diversity training and inclusion awareness in the agency has been very rewarding. Knowing that staff at The Howard Center has been engaged in conversations about these issues is important groundwork for people to challenge their biases, whether they relate to homophobia, racism, gender, or sexism. I always enjoyed pushing the envelope by sharing provocative articles and information about the various isms with our staff and the consequential conversations with those who shared different positions."

Tuipate's sense is that these rich exchanges of ideas will certainly continue: "After being offered the position of Diversity Coordinator, I realized that the most exciting aspect of the position was getting to know the people connected to the agency: their devotion to meet clients' needs, their openness, and, most of all perhaps, their welcoming me as one of them. I always think that working together as one body will get us where we want to go."

Hal, too, spoke of the devotion of Howard's staff: "I will miss most the passionate, caring staff at The Howard Center. Many of the staff that I have encountered are driven by the mission of the agency. While confronting one's own biases is never easy in creating a more inclusive organization, I have always experienced amongst the staff a willingness to learn and grow." ■

Exciting News: \$15,000 Challenge Grant!

The Howard Center has been given a new, exciting challenge. An anonymous donor has generously offered a \$15,000 challenge grant, which will be matched with all donations made above what supporters gave last year and all new donations.

Will you kindly consider a first-time gift or increasing your contribution this year so that your gift will go even further in assuring that our programs are sustained – and expanded?

We are deeply grateful for your response. Your donations truly make a difference and lead to positive, measurable results in our community. ■

Please use the envelope inserted in this issue for an easy way to send your donation.

Executive Director's Message Healing from Tragedy

by Todd Centybear, Executive Director



In the aftermath of the Essex tragedy as our agency supported those affected by what occurred, we found some comfort in a powerful truth: if you have key elements of a healthy community already in place, then in times of crisis you may call upon those "natural reserves" to support and sustain the members of your community.

The role of our agency in the Essex tragedy and others in the past was not to provide treatment or therapy; it was not about debriefing or fixing the problem. Instead, our role was to provide education and support; to offer the public clear, honest, up-front information; to respect and enhance the natural coping processes that were already in place within schools, families, and neighborhoods; to give people permission to reach out and help one another through an impossibly difficult time; to acknowledge the power of grief; and to offer further support and professional services if those affected indicated that these were needed.

The teamwork that occurred on the day of the Essex tragedy and in the weeks that followed was carefully organized and then orchestrated. It did not happen magically or instantaneously. Within our own agency, how we respond to community crises has been discussed, prepared, and adjusted to fit a wide variety of situations. Our community crisis response protocol allows us to know how to reach one another quickly and easily; we are aware of what each member's area of expertise is, and we are clear on what roles people will play in a crisis situation. In the Essex tragedy, trained responders were involved from literally all divisions of our agency.

(CONTINUED ON PAGE 7)



Superintendent of the Essex school system, Jim Fitzpatrick, and Robin Pesci, Director of First Call.

Compassion in Times of Crisis

The tragedy of the Essex school shootings on August 24, 2006, resulted in the deaths of two beloved teachers: Alicia Shanks and Linda Lambesis. The impact of this tragedy had far-reaching effects in our community and beyond. What follows is a recapitulation of the role that The Howard Center for Human Services' crisis teams played on that day and in the days and weeks that have followed as our community begins to heal from the event.

Alicia Shanks Memorial Fund

A memorial fund has been set up in Alicia Shanks' memory by her family. All funds donated to this memorial fund will benefit the residential programs of Howard's Baird division. Alicia was a long-time volunteer in the Baird division, whose involvement made a significant difference in the lives of children. ■

SECONDS AFTER CONTACTING the Essex police on August 24, 2006, school superintendent Jim Fitzpatrick made a call to Howard's Adult Mobile Crisis Services. His message was clear: "There's been a shooting. We need you."

Jim Huitt, Howard's Clinical Supervisor of Crisis Services, took immediate action. After touching base with Adult Behavioral Health Services division director Bob Bick, he contacted Mark Hoskin, M.D. (Medical Director of Howard's Crisis Services), and told him, "Let's just get out there." This decision allowed the crisis team to follow through on what Jim's 20 years of experience had taught him was the best first step: to get a few trained people immediately to the site of the crisis.

A team approach to the tragedy was evident from the beginning: in addition to Howard's Adult Crisis Team (which has eight full-time crisis workers), the Essex police, the FBI, Essex firefighters and EMTs, the Burlington police, and other area police and firefighters were on hand to offer support. The seven full-time crisis

(CONTINUED ON PAGE 7)

Artwork included in this CenterScope was part of the Art Hop 2006 show at 208 Flynn Avenue, September 8-9, entitled "Artistic Journeys: Artists of The Howard Center." Artists of the pieces in this issue are Camille Cardinal (artwork featured to the right), Jill Harvey (page 3), and Joel Bertelson (page 7).



"I was tired of doing nothing and thought that maybe I could do something that would make a difference."
—Scott O'Neil, co-founder of 100 on 100, Inc.



Kristen Hayden-West (left) and Catherine Shaban (right), both of Community Friends Mentoring in the Baird division, and Frank Gibney, one of the United Way's 2006 Hometown Heroes. Frank was recognized in the summer 2006 edition of CenterScope for his significant role in Howard's Community Friends Mentoring program.

It Takes a Community

The Community Outreach Program was allocated \$70,000 in funding from the State for the current fiscal year. Additional funding has been received from Fletcher Allen Community Health Foundation, the United Way of Chittenden County, the City of Burlington, and many Burlington businesses, including a new three-year commitment from Citizens Bank. The Howard Center wishes to extend its most sincere thanks to these organizations and to the following individuals who were instrumental in securing increased funding from the State:

- Ron Redmond, Executive Director, Church Street Marketplace;
- Nancy Wood, Executive Director, Burlington Business Association;
- Brigitte Ritchie, Vice President and State Director of Public Affairs and Community Relations, Citizens Bank;
- Chief Thomas Tremblay, Burlington Police Department;
- Penrose Jackson, Fletcher Allen Community Health Foundation;
- Chris Cole, General Manager, CCTA;
- Todd Centybear, Bob Bick, and Matt Young of The Howard Center;

- Martha Maksym, United Way of Chittenden County; and
- Bob Kiss, Mayor of Burlington.

Grant News

Safe Recovery, a Howard program, was awarded a \$15,000 grant by the Comer Foundation for its needle exchange program.

The Fieldstone Foundation awarded a \$4,000 grant to support the Outdoor Adventure and Outdoor Challenge Programs.

The Winooski Family Center was awarded the prestigious S. Whitney Landon Memorial Award for program excellence. This \$25,000 award was presented by the Turrell Fund through the Vermont Children's Trust Fund. Congratulations to WFC's Director, Karen Prosiak.

The J. M. McDonald Foundation awarded \$7,000 toward construction of a new playground at Pine Forest Children's Center.

Mobius granted \$3,000 to Community Friends Mentoring for program support. CFM also received a grant from the Child Development Division of the Agency of Human Services for Mentoring Children in Kinship Care.

The Turrell Fund awarded \$10,000 to the Mental Health Consultation and Training Program in the public schools in Chittenden County.

The Act I/Bridge Program was selected again this year by the Board of Trustees of the Vermont Eastern Star Home, Inc., to receive a donation in the amount of \$2,000. Sheryl Bellman, director of Adult Crisis Services, accepted the award at the annual meeting of the Grand Chapter of Vermont, Order of the Eastern Star, on June 2 in Burlington.

The ABHS and Baird divisions have been awarded funding from the Vermont Department of Health, Division of Alcohol and Drug Abuse Programs. This \$70,000 grant to Champlain Drug and Alcohol Services and Centerpoint Adolescent Treatment Services at Howard will increase counseling and support for Franklin and Grand Isle county teens and families struggling with substance abuse.

Dr. Anthony Quintiliani, clinical director in the ABHS division, reported the following: "Our independently evaluated smoking cessation program for Community Support Program clients has once again been funded by the Vermont Department of Health and The U.S. Centers for Disease Control and Prevention. We were successful in receiving \$40,000 this year to continue these important services.

"We were successful in obtaining a new \$10,000 grant from the Vermont Department of Health Tobacco Control Program to be used for 'new' case finding through our intake processes. This new grant will enable ABHS to facilitate contacts for Howard Center clients and their families interested in accessing appropriate smoking cessation services. If you know of clients or family members who wish to stop smoking, please give their names, telephone numbers, and a good time to reach them to me at anthonyq@howardcenter.org or (802) 864-8095. Please be

Compassion in Crisis (CONTINUED FROM PAGE 1)

workers from First Call, Howard's 24-hour crisis service for children and families within the Baird division, and other Howard Center staff members and programs were also immediately involved. Fletcher Allen Health Care sent several of their staff members to work with Howard's crisis teams. In addition, Washington County Mental Health offered to help staff our offices while our crisis workers were in Essex, and other area human services agencies and private therapists called to offer their services.

Robin Pesci, director of First Call, was struck from the start by the magnitude of this tragedy: "This was the most widespread crisis I have had to respond to during my time with HCHS. This event touched the lives of those closely associated with it but also those more distantly associated with it, children and adults. An event of this nature causes people to need to redefine their world and how they find safety and security in it."

First Call, explained Robin, immediately focused on "being available to the community and making sure people knew what resources existed to support them and how to get to those resources." Adult Crisis Services, continued Jim, "provided support to teachers and families impacted by the tragedy when they called in on the crisis line and then saw those who needed one-on-one crisis intervention face-to-face."

At the same time, Howard's crisis team leaders met with Superintendent Fitzpatrick and his staff to plan and implement the crisis response. Over the course of the weeks to follow, more than 40 Howard Center staff members became involved in providing support services to the Essex community. These services included but were not limited to the following: offering immediate crisis support to anyone who had been traumatized by the events, holding numerous meetings with school faculty and staff members, conducting information sessions

for community families, and providing updated information to the broader community.

Jim pointed out that even while Howard's crisis services were fully present for this specific tragedy, the care for those in crisis in other parts of the community still had to be addressed. "Our function of responding to our day-to-day crisis situations didn't stop. Howard's crisis services continued to respond to those in need. There was no way that I could have spent the time I did in Essex during those first two weeks without knowing that I could depend on those Howard Center clinicians to continue to do the excellent work they usually do."

Crisis Information

Bob Bick, director of the Adult Behavioral Health Services division at Howard, explained that as a result of 9/11, mental health counselors are now considered first responders in any crisis situation. If you or someone you know experiences a crisis, please contact The Howard Center:

For Adults in Crisis: (802) 863-2400.
For Children in Crisis: (802) 864-7777.

For further information, please access Howard's website, www.howardcenter.org.

Even now Howard Center crisis services continue to offer support for those affected by the Essex tragedy. As Jim explained, "Our services are providing phone support and face-to-face crisis assessment as people come to terms with what has happened. There has been a delayed effect for some in Essex, adults and children. This was a triggering event for past trauma, and we are focusing on getting those people hooked up with ongoing therapy and/or psychiatry, whether it's through our own services or from other providers in the community."

This specific event also left its mark on the crisis workers themselves. "We deal with tragedy every day in our work," explained Jim, "but what was different about this specific incident was the scope, magnitude, and number of people affected by its impact. Thankfully the staff at HCHS (and others in the community who helped) showed their true colors – unselfish compassion." ■

Director's Message (CONTINUED FROM PAGE 1)

In a recent letter to Howard's staff, I wrote, "Quite honestly, I have not been surprised with your response to 'the call.' I am, however, truly humbled by it. My sincere and deeply felt thank you to those who served, those who will serve, and those whose day-to-day unselfish efforts allow others to step forward."

I offer these same thanks to our community at large. Support services of all kinds and at all levels keep people from feeling lost or powerless or disconnected. This support also allows people to see their own inner strengths – even while they are suffering or hurting. Ultimately our hope as a human services agency is that in providing support for individuals and communities they may grow even stronger as they heal themselves. ■

On behalf of The Howard Center for Human Services, I extend heartfelt sympathies to the families of Alicia Shanks and Linda Lambesis.



"I hope to harmoniously work with each one of my colleagues and reach the point where we accept one another with all our differences."

—*Tuipate Mubiay,*
Howard's Diversity Coordinator



Printing of CenterScope
by Chittenden Bank.

If this issue is addressed to someone who no longer works with your organization, please notify us of the address correction at the Development Office of HCHS, 651-7030.

"I am very proud to be part of this organization and am so impressed with the professional competence, dedication, and caring of our staff."

—*Board President Kathy Connolly in a recent letter to Executive Director Todd Centybear*

100 on 100 Relay: A Story of Vision

Picture beautiful Vermont Route 100 in the late summer: the deep green of the foliage, the stunning side-road views, the landscape that best exemplifies Vermont. Now imagine taking a leisurely run along this historic route. Finally – and this is a big jump — envision participating in a 100-mile relay race on Route 100.

These steps describe the genesis of the 100 on 100 Relay Race, the brainchild of Robert O'Neil and Scott O'Neil, former IDX employees and current GE Healthcare employees — and the founders of the 100 on 100, Inc., a group with the goal of organizing 100-mile relay fundraisers to benefit local nonprofit agencies.

The Howard Center's Outdoor Education Programs for Children and Teens became the lucky beneficiary of funding from the 100 on 100 Relay this year and last year when, as Janice Poplawski of the Organizing Committee explained, the group discovered that "the Girls on the Run Program and the Outdoor Adventure Program met our criteria of having synergies with our race because of their physical, activity-based programs. We had a strong desire to select a charity that assisted children and youth."

Scott described the next layer of the story behind the 100 on 100: "It really came about as a search for something to be passionate about. I have never been particularly good about volunteering even though I've constantly struggled with the state of the world and how I should be

Over the past two years, The Howard Center has received \$10,000 from the 100 on100 and \$2,450 from Poulin Performance to support our Outdoor Education Programs for Children and Teens.

The Poulin Performance 5K

"The Howard Center's Outdoor Education Programs for Children and Teens were a nice fit for our business as we are health care providers to many people who participate in outdoor programs themselves. Runners tend to enjoy the sense of 'giving back' by participating in fundraising events. I think it is very important for businesses to give back to a community that supports their business concept. Many kids with disabilities do not have the opportunities to participate in outdoor recreation, and supporting The Howard Center's programs allows us to provide and contribute in a way we may not otherwise be able to."

—*Jen Poulin, co-owner of Poulin Performance, addressing why she and her husband and business partner Chris chose to initiate the Poulin 5K to benefit The Howard Center.*

doing more. When push came to shove, I just never signed myself up to help. I was tired of doing nothing and thought that maybe I could do something that would make a difference."

When asked what steps were involved in planning a 100-mile event, Scott noted, "Our project plan is roughly 300 tasks with hundreds of subtasks and thousands of decisions to make. This year's high-level plan started within weeks of the conclusion of last year's event when we began contacting the fifteen towns that we pass through for permission to do so. Picture yourself planning a wedding where you can't afford to hire outside help and therefore have to do everything yourself. Now spread that wedding across 100 miles, and you are getting close to the requirements of the event. As soon as you're done, you have the pleasure (seriously) of start-

Promoting independence, wellness, and the preservation of families.

The Baird Center for Children and Families

Howard Community Services

Adult Behavioral Health Services

CenterScope
Susie Merrick, Editor
A publication of
The Howard Center for Human Services
208 Flynn Avenue, Suite 3J
Burlington, VT 05401
Telephone 802-660-3678
Fax 802-660-3665
www.howardcenter.org
CenterScope is published three times a year

Todd Centybear
Executive Director

Mary McKearin
Planning and Development Director

Gail Rosenberg
Development and Public Relations Manager

Development Office
Telephone 802-651-7030
Fax 802-660-3665



United Way of Chittenden County

The Howard Center is a United Way Agency.

Board of Trustees

Katherine Connolly
President

Karen O'Neill
Vice President

Mark Baglini
Treasurer

Marna Tulin, Ph.D.
Secretary

Anne Averyt
Elizabeth Bassett
Rick Blount
Patricia Camp
Joseph Ellovich
Kevin Endres
Elizabeth Grant
JJ Hamilton

Curt Hennigar
Peter McCarthy
John McSoley
Michael Simoneau
Deborah Smith
Jim Stuart
Carmen Thibodeau

Honorary Members

Jack Dwyer
William Heaslip
E. William Leckerling
Susan Cain O'Brien
George Philibert
Tony Villanti
Rabbi Max Wall

ing all over again for next year and knowing that you are making a difference!" ■

This year's 100 on 100 Heart of Vermont Relay Race, a 100-mile and 6-person relay team event on Route 100, was held August 19. All profits from the race will benefit The Howard Center's Outdoor Education Programs for Children and Teens. For more information, please go to 100on100.org.

The Howard Center through the Baird division is a partner organization, along with the South Burlington School District (applicant) and the Vermont Department for Children and Families, in Chittenden County Students FIRST (Fully Integrated Resources for Schools/Mental Health Teaming). The partner organizations, along with a consortium made up of all Chittenden County School Districts, will participate in an 18-month program to integrate schools and mental health systems. South Burlington was one of 16 applicants from throughout the country to receive funding. The award from the U.S. Department of Education is for \$320,394. The project also includes \$41,089 in local funding.

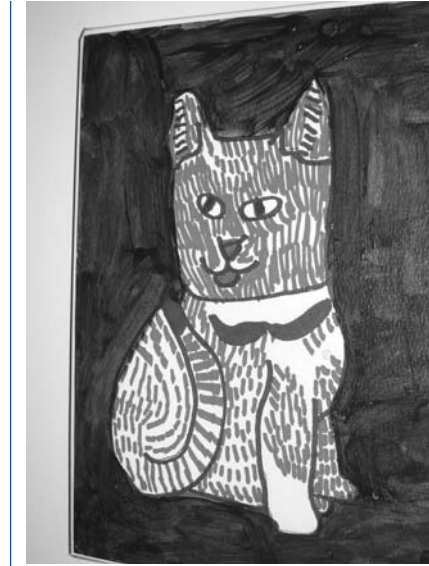
sure to mention that you're calling for smoking cessation services. I will handle it from there.

"We were also successful in obtaining a new \$5,000 grant to initiate clinical health psychology services in ABHS. These services will include training/supervision groups for staff and direct services for some of our clients. Our tentative plan is to organize and initiate a mobile clinic rotating through our CSP residential housing programs.

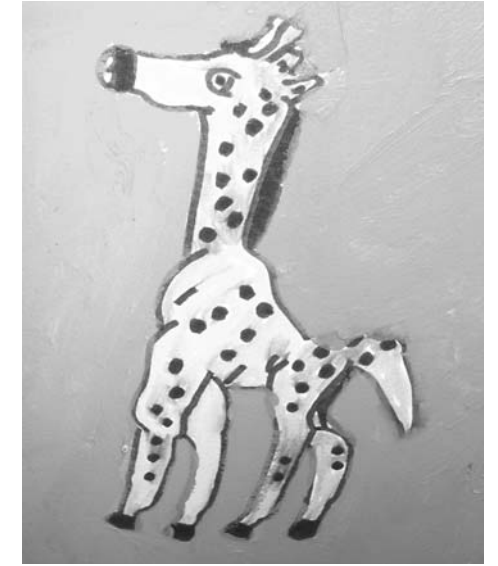
"Lastly, we were successful in obtaining a new grant of \$1,100 to continue providing clinical training in co-occurring disorders to other Community Mental Health Centers for the Vermont Department of Health, Division of Mental Health.

"This year our total grant funds for these combined services is over \$56,000."

We are grateful to all of the above for their generous support of existing and expanded programs at our agency. ■



Artwork by Jill Harvey



Howard Center Staff Members Aid Hurricanes Katrina and Rita Victims

In their professional roles, Howard Center staff members daily support those they serve, but countless employees also serve as volunteers to help others in need. In these weeks after the one-year anniversary of Hurricanes Katrina and Rita, we celebrate those Howard Center employees who have worked tirelessly to provide disaster relief to the victims of these tragedies.

Max Henson-Stroud of the HCS division and **Gail Rafferty** of Baird were instrumental in taking up collections at Howard to purchase supplies later taken in tractor trailers down south. Many more employees, like **Tracy Harris** of Baird, involved their own children in making purchases for Katrina victims.

Facilities director **Ed Vizvarie** and his wife Jane took in a 17-year-old boy from Slidell, Louisiana, to live with them for three months.

Betsy Cain of Baird traveled to Texas through the Red Cross to aid victims of Hurricane Rita.

Betsy had a critical role as a mental health support person to the volunteers working directly with people who had lost everything in the storm and were living in shelters. She also provided mental health support directly to the victims of Rita.

Christine Bourque of Baird traveled with her husband to New Orleans for a week last November. Working with Operation Helping Hands from St. Michael's College, they gutted houses outside the Ninth Ward. They hope to head back down to help again this year.

Laura Schaller of Baird worked debriefing volunteers in Montgomery, Alabama, and staffing the call center set up for those waiting for financial assistance from FEMA.

We salute the efforts of these Howard Center staff members and all others who played a role in helping members of our larger global community recover from these events. ■

“Thankfully the staff at The Howard Center (and others in the community who helped) showed their true colors – unselfish compassion.”

—Jim Huitt, Howard’s Clinical Supervisor of Crisis Services, referring to the agency’s response to the Essex tragedy.

“We know that the money raised goes to a great cause. . . . It also gives us a chance to promote the services offered by the Howard Center.”

—Volunteer Joe O’Brien on why he enjoys volunteering at the gift wrap event.

Volunteer List

At The Howard Center for Human Services, we daily are deeply grateful for the time, support, and enthusiasm of our volunteers, one of our agency’s most precious resources. We celebrate and thank those volunteers named below and any others we have inadvertently left off this list. *Donors for the Holiday Giving Program will be listed in our Annual Report.*

Big Night

Mary Anne Gucciardi
Justine Dee
Germain Mopa-Njila
Heritage Flight
Gary Hotaling
Katie Merrick
Janie Merrick
Yi-Yu Pan
Annette Perras
Diane Reidy
Elizabeth Reidy
Paul Reidy
Jennifer Shewmake
Pam Thompson
Ben & Jerry’s
Coca-Cola
Doubletree Hotels/Trader Duke’s
Green Mountain Coffee Roasters
G.T. Bagel Factory
Handy’s Lunch
Hannaford’s
Kohl’s
Lake Champlain Chocolates
Mission-Itech
Outback
Price Chopper
Rusty Scuffer
Shaw’s
Sheraton Burlington
Sodexo
UVM Athletic Department
Windjammer Restaurant
Wyndham Burlington Hotel
AAA

Affectionately Cats
A Single Pebble
Anne Averyt
Bearded Frog
Bed, Bath, and Beyond
Bistro Sauce
Black Sheep Bistro
Chris Bohjalian
Bolton Valley Resort
Catamount Family Center
Chappell’s Florist
Child Travel
Conant Custom Brass
Costco
Curves for Women
Daily Planet
Dakin Farm
Dom Deluise
Earl’s Cyclery & Fitness
ECCO
Everybody’s Massage
Expressions
Five Spice Café
Gracie’s
Great Harvest Bread Company
Green Mountain Inn/The Whip
Healthy Living
Henry’s Diner
Heritage Automotive Group
Homeport
Hummel America
Karen Hussey
Inn at Baldwin Creek/
Mary’s Restaurant
Inn at Essex
Inn on the Common, Craftsbury
Isabean
Lorraine Jenne/Green Mtn.
Accessories
JetBlue Airways
KelliherSametsVolk
Kiss the Cook
Klinger’s Bread Company
Koto’s Japanese Steakhouse
L’Amante
Lake Champlain Maritime Museum
Lake Champlain Transportation
Kathy Larkin
Leunig’s Restaurant

Libby’s Blue Line Diner
Linens ‘n’ Things
Lippa’s Jewelers
Loretta’s Fine Italian Cuisine
Lunaroma
Mad River Glen
Marilyn’s
Michael Kehoe Ltd.
Milne Travel
Montshire Museum of Science
N.A. Durso Woodworking
NEOS Overshoes
Oasis Diner
Otter Creek Awning & Patio Rooms
Outback
Parkway Diner
Annette Perras
Petra Cliffs Climbing Center
Pine Forest Children’s Center
students
Poulin Performance
Dana Poverman/The Carlisle
Collection
Ri Ra, The Irish Pub
Rocky Ridge Golf Club
Rotisserie Restaurant
Lisa Scottoline
Shelburne Athletic Club
Shelburne Farms
Shelburne Museum
Silver Palace
Sleepy Hollow Inn
Smuggler’s Notch
Dr. Julie Spaniel
Starbucks
Starry Night Café
Stella
Stowe Mountain Resort
Stoweflake Mountain Resort
and Spa
Sugarsnap
Talent Skatepark
Taste of Burlington
Three Tomatoes Trattoria
Tick Tock Jewelers
Topnotch Resort and Spa
Trapp Family Lodge
Trattoria Delia
Marna Tulin, Ph.D.

ULU Brand Footwear
Vermont Mozart Festival
Vermont Symphony
Orchestra
Zabby & Elf’s Stone Soup

Community Friends Mentoring

Amy Alfieri
Judy Audette
Michael Barton
Nicholas Beahan
Lynn Berardinelli
George Berry
Michelle Boutin
Nikki Brisson
Glorianne Brown
Ken Brown
Wendy Byrne
Kathy Caban
Daniel Capone
Nancy Carlson
Elaine Carpenter
Gary Cayia
Kim Chathah
Deb Chisholm
Cindy Chittenden
Jamie Clark
Debbie Clavette
Bob Clawson
Gail Clook
Nancy Colbourn
Lea Colusuonno
Jeannie and Thomas
Compter
Katie Compton
Lucy Cooney
Mike Cousino
Jennie Davis
Nick de Tarnowsky
Tom Dettre
Anna Dorey
Marie Dupont
Jaimelee Eldred
David Ellenbogen
Kristina Ellsworth
Wendy Fichtner
Kiera Finucane
Holly Francis

Emily Gibbs
Frank Gibney
Scott Goyette
Lynn Gregory
Emilie Grenier
Elizabeth Grupp
Kelli Guider
Steven Habif
John Hamerslough
Jean Marie Haverstick
Nate Hayward
Lynn Hoffelt
Irene Horbar
Arthur Hynes
Dawna Jarmusz
Megan Johnson
Chris Labelle
Cathy Lambert
Kerstin Lange
Marie Lemay
Michael Leugers
Mike Licalsi
Shawna Lidsky
Kristol Loyer
Carrie Lutz
Erica MacConnell
Sue Macmillan
Arnie Malina
Melissa Mallette
Corey Mallon
Jill Mason
John McAuliffe
Christine McConnell
Lisa McEwing
Patty McMullen
Jean Modica
Shona Mossey-Lothrop
Joanne and Howard
Muehlberger
Christine Neejer
Sherry Norton
Malcom Noyes
Kim Pashby
Debba Pearce
Justin Pepin
Melissa Perham
Calen Perkins
Grace PerLee

Paula Poquette
Gretchen and Richard
Pritsky
Brent Raymond
Gordon Raymond
Nancy Rehm
Lindsay Reszewski
Kathy Roberts
Lonni Rodgers
Mary Ross
Jacqui Samale-Roden
Bethany Scott
Ed Scott
Kathy Searles
Jim Sestokas
Ken Signorello
Alicia Snider
Bill Spence
Allison St. Jean
Carmen Stafford
John Stefani
Becca Sumner
Tiffany Szymaszek
Jen Tait
Janet Thygesen
Robert Tomik
Penne Tompkins
Vanessa Vincent
Alice Weston
Christie White
Neil Whittelsey
Pat Wiggett
Rick Wrabel
Naomi Wright

ABHS

Larry Barber and the Volunteers in Mission from the United Methodist Church, Burlington
IBM
Molly Prescott

Park Street

Gayle Lang of Grand Performance Studio of Dance

Westview House

Marcheta Townsend
Baird
Dana Rachlin
David Turnock, Lisa Mikulyne, and Avi Altman, all of the helicopter team

Pine Forest Children’s Center

Dov Stucker and the children at Edmunds Middle School
Kate Keough and the Americore Vista students
Keshia McDonald
Maeve Gustafson

Gift Wrap

Wendy Aiken
Susan Amilhat
Gerhard Andres
Hannah Avarraschild
Barbara Bartlett
Bartlett Family
Sheryl Bellman
Katie Bennett
Hanna Black
Chris Boerner
Cheryl and Hanna Brosna
Lynn Budnick
Alexis Campbell
Carrie Campbell
Chris Carhart
Kaya Carlisle
Dee and Jim Carter
Lyressa Chien
Sandra Clouatre
Beth Cole
Jill Collingswood
Kathy Connolly
Kathy Corbin
Darlene Corcoran
Brandi Corrigan
Lynda Cummings
Joyce Curry
Michael Decelles

Shawn Demeris
Jen Dillner
Malaika Dos Remedios
Tracy Drake
Sherri Dunne
Elise Eaton
Gina Evans
Christy Ferguson
Tracy Fisher
Megan Flanagan
Sheila Flaves
Diane Ford
Brian Gilbar
Pat Godard
Cindy Goodrich
Rebecca Guenther
Pam Hansen
Lindsay Hartley
Cheryl Hathaway
Hestor Family
Beth Holden
Melissa Hoppes
Jenn Hussey
Karen Hussey
Ann Janda
Celeste Jones
Sarah Jones
Deborah Keel
Julie Kelley
Kathy Kimball
Joan Knight
David Knoff
Cynthia Langdell
Kim Laroche
Christie Layden
Betsy Magee
Melissa Mallette
Bonnie Mallin
Kristin Mayhew
Katie Menard
Sharon Menard
Sandy Millbank
Allison Miller
Ilana Miller
Rachel Miller
Denise Nagelschmidt
Lorie Nichols
Jessie Noel
Joan Novelli

Louise and Joe O’Brien
Pat O’Brien
Alison O’Leary
Bonnie Paquette
Tonya Parceh
Clara Pedley
Mary Ellen Pierce
Heidi Rabidou
Chelsea Ransom
Reed Family
Mary Jane Reen
Michalla Rempp
Mercedes Resteghiri
Hilary Richard
Marissa Rogate
Maeje Rooney
Katrina and Preston Rowe
Danielle Rylant
Heather Rylant
Brittany Sanderson
Linda Sanderson
Brenda Schill
Jenn Shatagin
Lauren Simmons
Ryan Simmons
Justine Simonetti
Sarah Jones
Catherine Simonson
Sheilagh Smith
Susan Sperling
Ana and David Stamatis
Barb Stebbis
Megan Sullivan
Cheryl and Nicole
Sweeney
Claire Tarte
Sarah Terk
Carmen Thibodeau
Anita Thomason
Jean Train
Heidi Turner
Angela Viani
Meredith White
Agnes Williams
Marlene Williamson
Audrey Wipple
Justin Worthley